

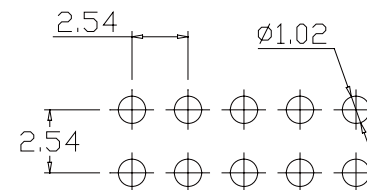
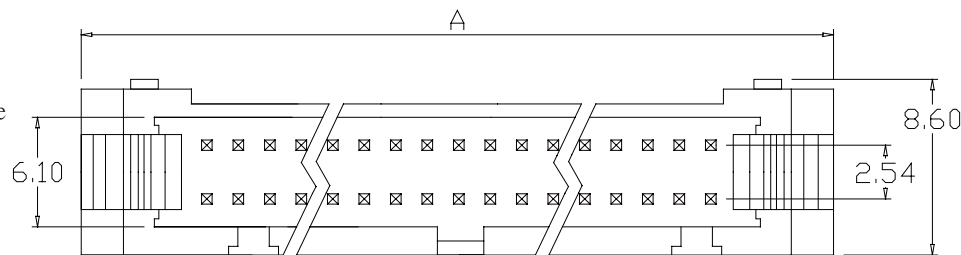
BY	CHK	REVISION RECORD MODIFICATIONS	DATE	REV.
ALLEN		RELEASE TO PRODUCTION	2007,8,3	1.0

**SPECIFICATION**

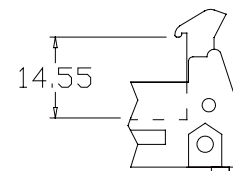
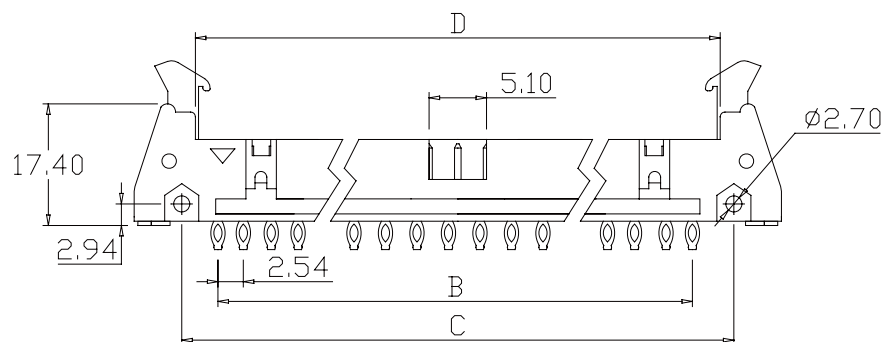
Current Rate: 3 AMP  
 Insulation Rrsistance: 1000mΩ Min  
 Contact Resistance: 20mΩ Max  
 Dielectric voltage: 1000V AC for one minute  
 Operation Temperature: -40°C to +105°C

**MATERIAL**

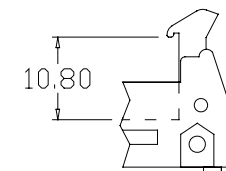
Insulator: Polyester,UL94v-0  
 ©Standard: P.B.T  
 Contact Pin: Brass  
 Finish: Tin, Gold Plated  
 ©Standard: Gold Flash all over



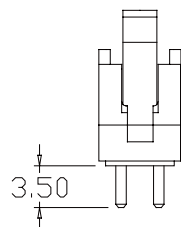
Recommended PCB Layout  
 (PCB TOLERANCE±0.05)



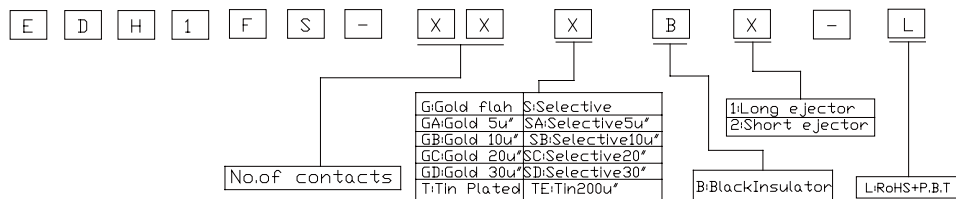
Long ejector



Short ejector



Position	DIMENSION			
	A	B	C	D
10	31.88	10.16	21.84	17.96
14	37.02	15.24	26.92	23.04
16	39.52	17.78	29.46	25.58
20	44.74	22.86	34.54	30.66
26	52.20	30.48	42.16	38.28
34	62.40	40.64	52.32	48.44
40	70.04	48.26	59.94	56.60
50	82.72	60.96	72.64	68.76
60	95.40	73.66	85.34	81.46
64	100.50	78.74	90.42	86.54



APPRO	CHECK	DRAWN	PART NO.	EDH1FS-XXXBX-L	DESCRIPTION	
			ITEM NO.			
			DRAW NO.			
			UNIT	mm SCALE no		
			TOLER	NO.		
			Tel:0769 22020068 Fax: 0769 22020069 E-mail: sales@vigortec.com			